



IMAGINE YOUR STORY

Mythology Secret of the Mummy

Materials:

8.5 x 11 printer paper

Crayons, Markers, Colored Pencils

Glue or Tape

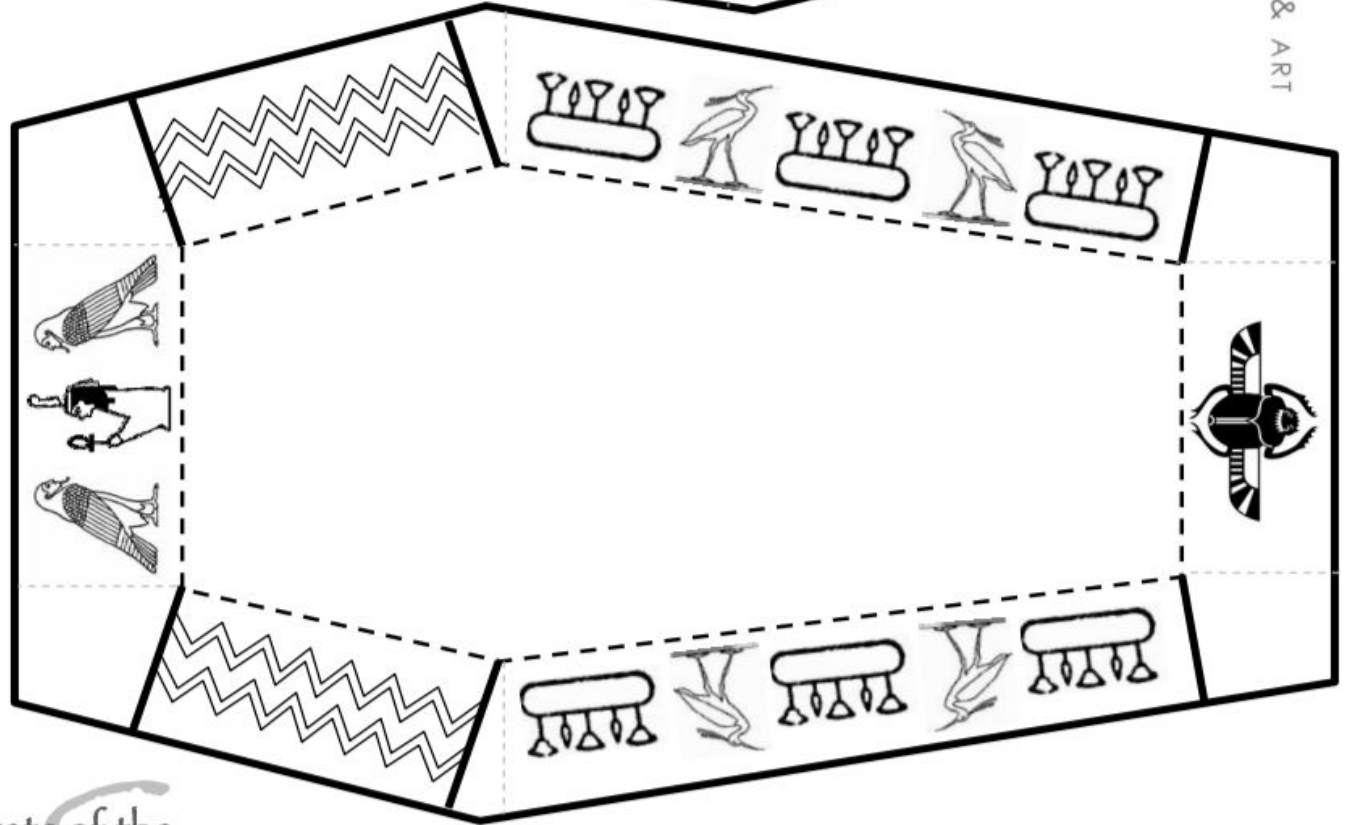
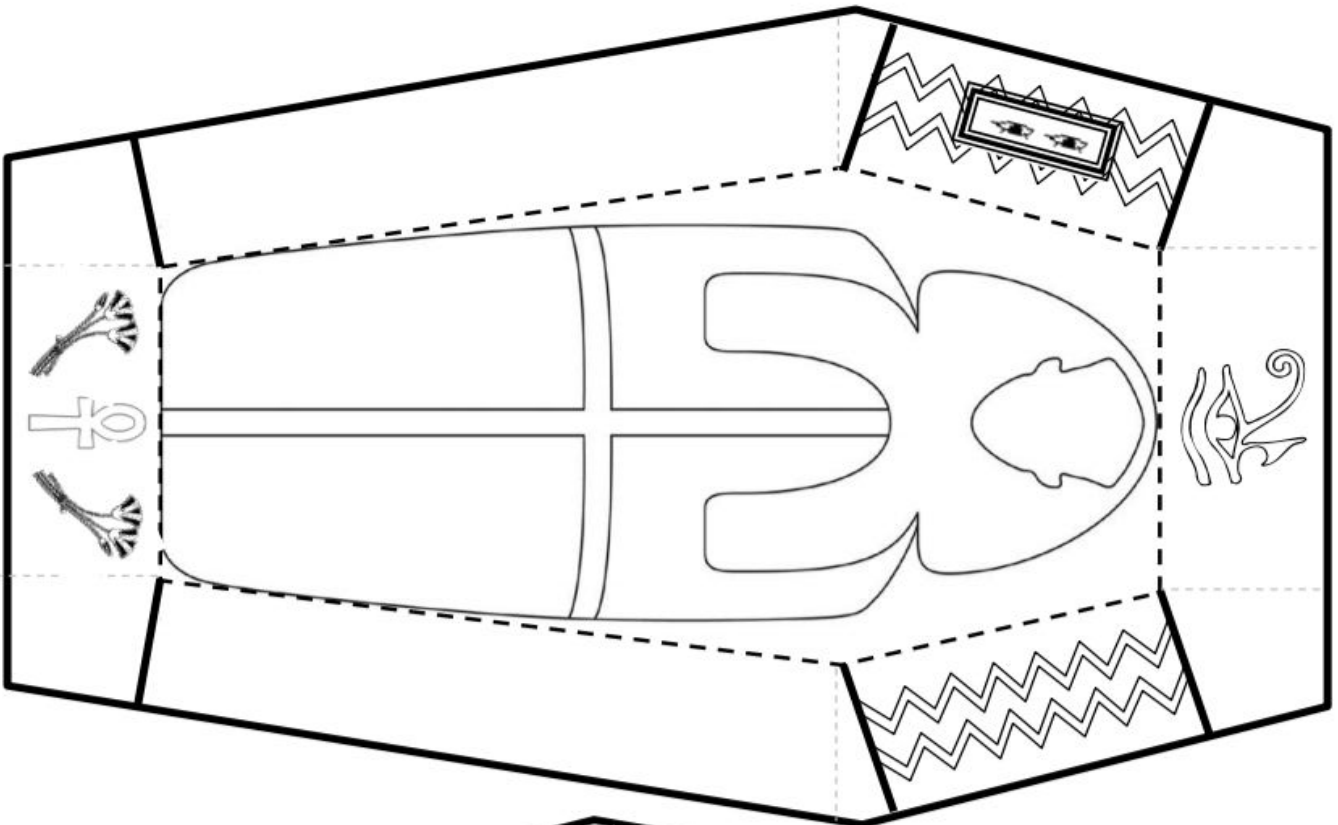
Instructions:

1. Print out the sarcophagus (on next page).
2. Color it in however you would like! Draw a face, patterns and other things to decorate.
3. Carefully cut out the sarcophagus following the **dark** lines. This will make the tabs.
4. Fold along the dotted lines.
5. Glue or tape the tabs inside the box.
6. Before closing completely, hide your secret treasure in the coffin!
No one but you can open it without unleashing the curse of the mummy!

(Courtesy of The Everhart Museum of Natural History.

<http://www.everhart-museum.org/Education/Kids/Egypt/Egypt.Makelt.htm>)





Secrets of the Sarcophagus

A sarcophagus (a word originating from the Greek term meaning "eater of flesh") was a coffin made of stone, wood, or a paper, that the Egyptians used to house the mummified remains of all types of people – not just the pharaohs. Sarcophagi were covered with carvings or paintings depicting the person entombed, important symbols, and hieroglyphics, all which were to help the individual enter and peacefully reside in the afterlife. To make your own sarcophagus, color in the pattern, cut it out following all dark lines (including the flaps). Fold along the dotted lines, and tape or glue the flaps in place. What secrets will you store inside?